

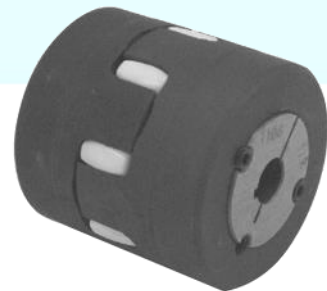


**BLACKSHOW  
AFRICA**

**POWER TRANSMISSION PARTS**

Spare parts in-stock when you need them

**JAW COUPLINGS**



[www.blackshowafrica.co.za](http://www.blackshowafrica.co.za)

## CURVED JAW

## PERFORMANCE DATA

The TRASCO® coupling is a flexible coupling with curved jaw design that has the highest ratio transmitted power/dimension in its category. The construction allows safe power transmission between driver and driven shafts, absorbing impact loads and torsional vibrations. Hubs are stocked in cast iron and aluminium, but also available in steel on request. It is available with both pilot bore, standard hub and long hub series, taper bore and Flange mount. A wide range of elements including Shore hardness of 80A (Blue), 92A (White/Yellow) & 98A (Red) are available across the range. Elements are rated for normal operating temperatures up to 90 °C. TRASCO couplings are available to suit standard British taper bore.

\* White/Yellow element Shore 95 A instead of Shore 92 A

Part No.	Max Bore (A Type)	Max Bore (B Type)	Power at 100 RPM kW	Nominal Torque (Nm)			Normal Maximum Speed (RPM)
				Shore 80 A	Shore 92 A	Shore 98 A	
19/24	-	24	0.105	4.9	10.0	17.0	14000
24/32	24	32	0.366	17.0	35.0	60.0	10600
28/38	28	38	0.995	46.0	95.0	160.0	8500
38/45	38	45	1.990	93.0	190.0	325.0	7100
42/55	42	55	2.775	130.0	265.0	450.0	6000
48/60	48	60	3.246	150.0	310.0	525.0	5600
55/70	55	70	4.293	180.0	410.0	680.0	4750
65/75	65	75	6.545	205.0	625.0	950.0	4250
75/90	75	90	13.403	475.0	1280.0	1950.0	3550
90/100	90	100	25.131	1175.0	2400.0	3600.0	2800
100/110*	115	-	51.832	-	4950.0	-	2500
110/125*	125	-	75.393	-	7200.0	-	2240
125/145*	145	-	104.712	-	10000.0	-	2000
140/160*	160	-	134.031	-	12800.0	-	1800
160/185*	185	-	201.047	-	19200.0	-	1500
180/200*	200	-	293.194	-	28000.0	-	1400

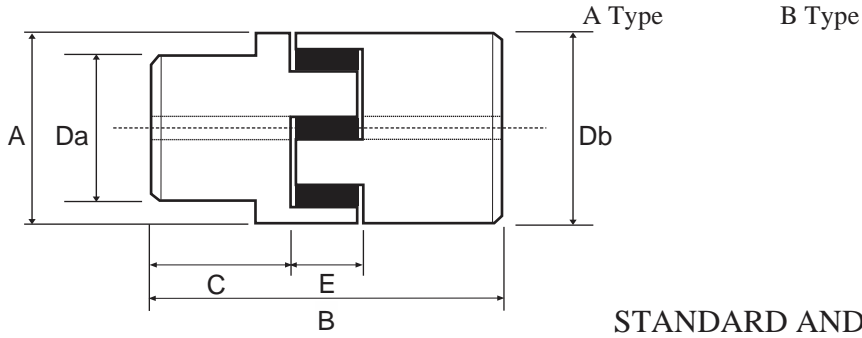


Power at 100 RPM based on  
White/Yellow element

TAPER BORE  
SERIES

FLANGE SERIES

# DIMENSIONAL DATA



## STANDARD AND LONG SERIES

Part No.	Bore				A	B Std	C Std	C Type A Long	C Type B Long	Da	Db	E
	A Type		B Type									
	Min	Max	Min	Max								
19/24	-	-	-	24.0	40.0	66.0	25.0	-	50.0	-	40.0	16.0
24/32	8.0	24.0	10.0	32.0	55.0	78.0	30.0	50.0	60.0	40.0	55.0	18.0
28/38	8.0	28.0	10.0	38.0	65.0	90.0	35.0	60.0	80.0	48.0	65.0	20.0
38/45	10.0	38.0	12.0	45.0	80.0	114.0	45.0	80.0	110.0	66.0	80.0	24.0
42/55	10.0	42.0	12.0	55.0	95.0	126.0	50.0	110.0	110.0	75.0	95.0	26.0
48/60	12.0	48.0	12.0	60.0	105.0	140.0	56.0	110.0	140.0	85.0	105.0	28.0
55/70	15.0	55.0	15.0	70.0	120.0	160.0	65.0	110.0	140.0	98.0	120.0	30.0
65/75	15.0	65.0	15.0	75.0	135.0	185.0	75.0	140.0	140.0	115.0	135.0	35.0
75/90	15.0	75.0	15.0	90.0	160.0	210.0	85.0	140.0	170.0	135.0	160.0	40.0
90/100*	20.0	90.0	20.0	100.0	200.0	245.0	100.0	170.0	210.0	160.0	180.0	45.0
100/110	45.0	115.0	-	-	225.0	270.0	110.0	-	-	-	180.0	50.0
110/125	55.0	125.0	-	-	255.0	295.0	120.0	-	-	-	200.0	55.0
125/145	55.0	145.0	-	-	290.0	340.0	140.0	-	-	-	230.0	65.0
140/160	55.0	160.0	-	-	320.0	375.0	155.0	-	-	-	255.0	75.0
160/185	75.0	185.0	-	-	370.0	425.0	175.0	-	-	-	290.0	85.0
180/200	80.0	200.0	-	-	420.0	475.0	195.0	-	-	-	325.0	60.0